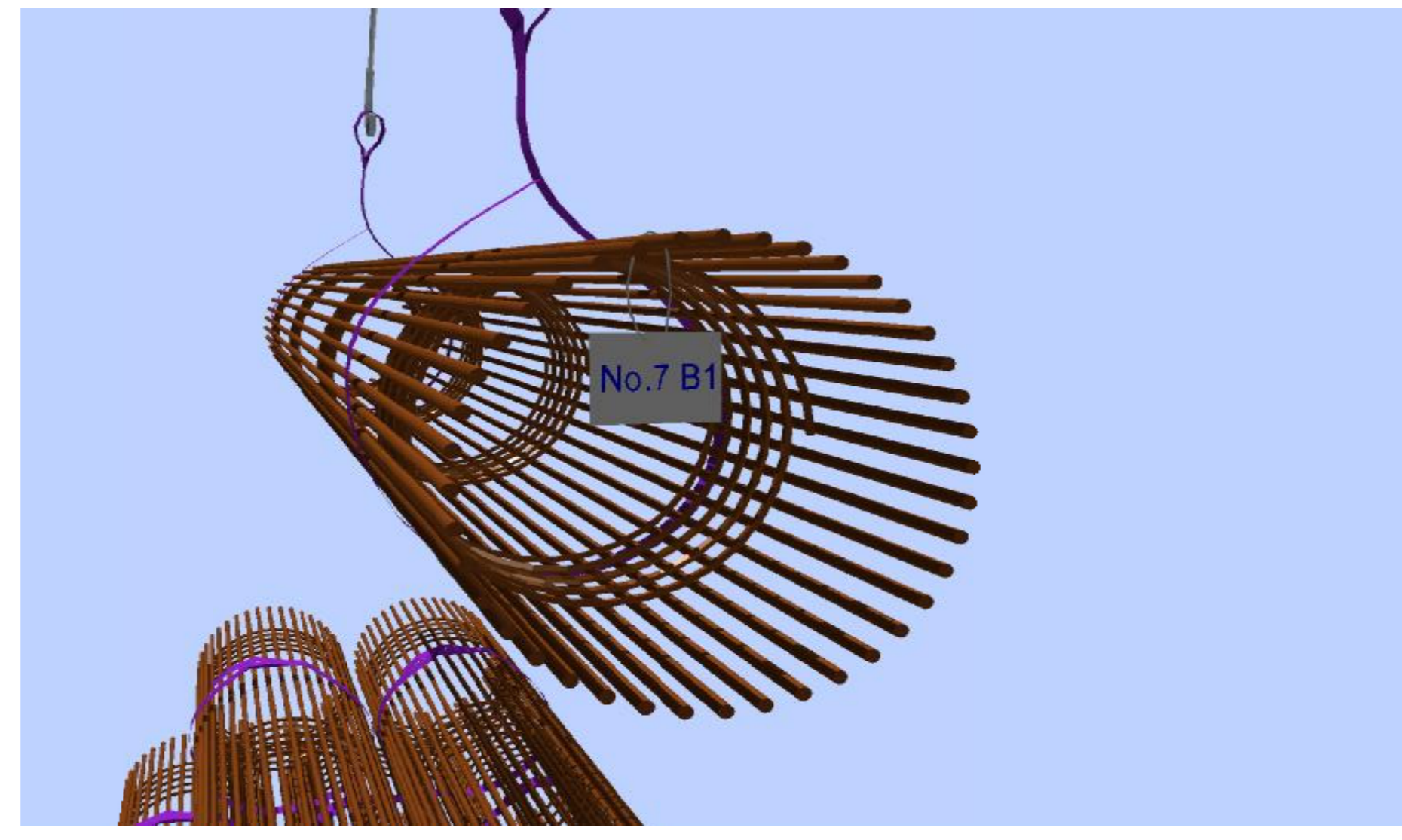
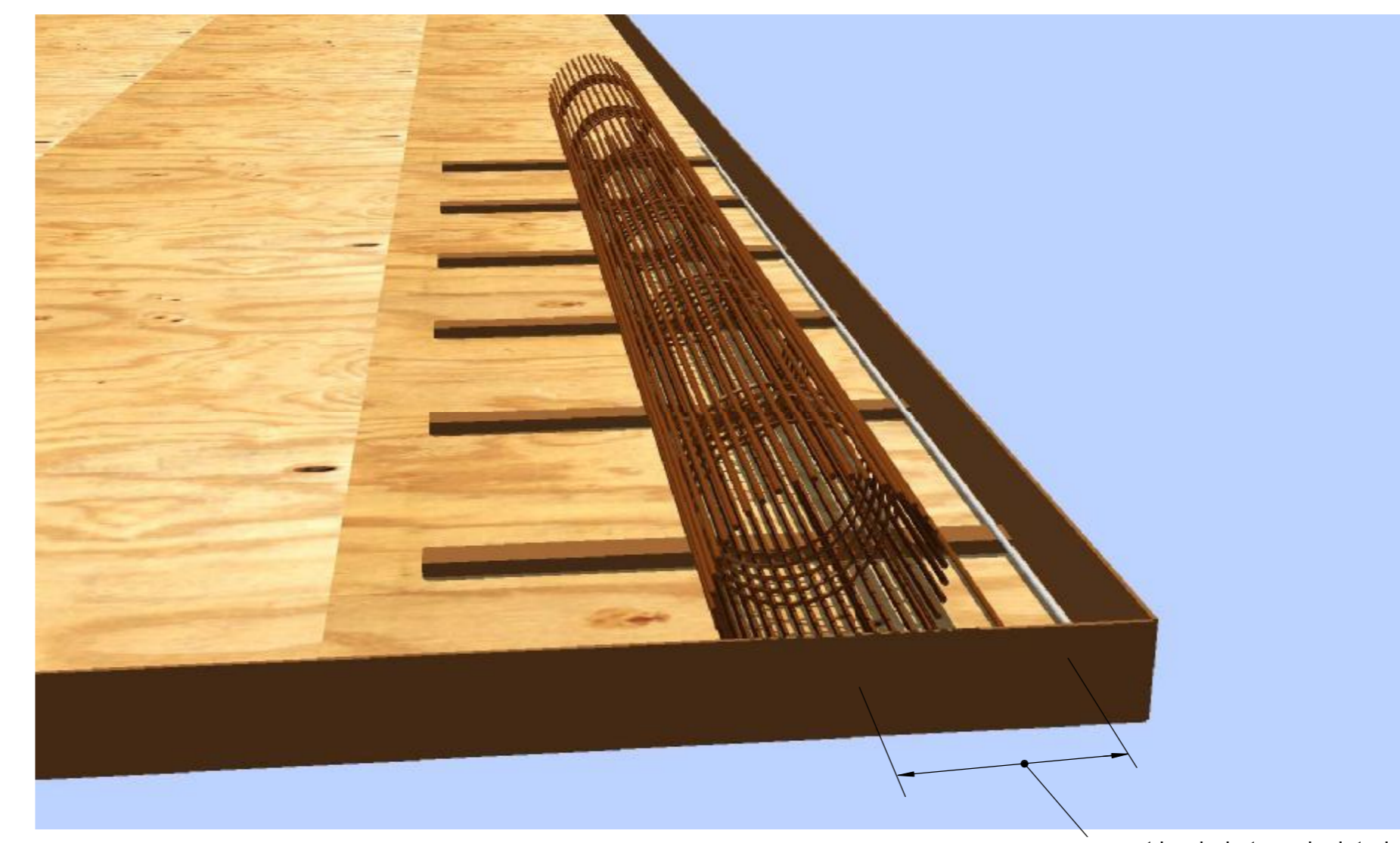


1. Unload and stacking of standard 25 Tonne load with use of preslung one way Lifting Straps - Approx 1hr



2. Identify and lift carpet into position - (1-5 mins per carpet)

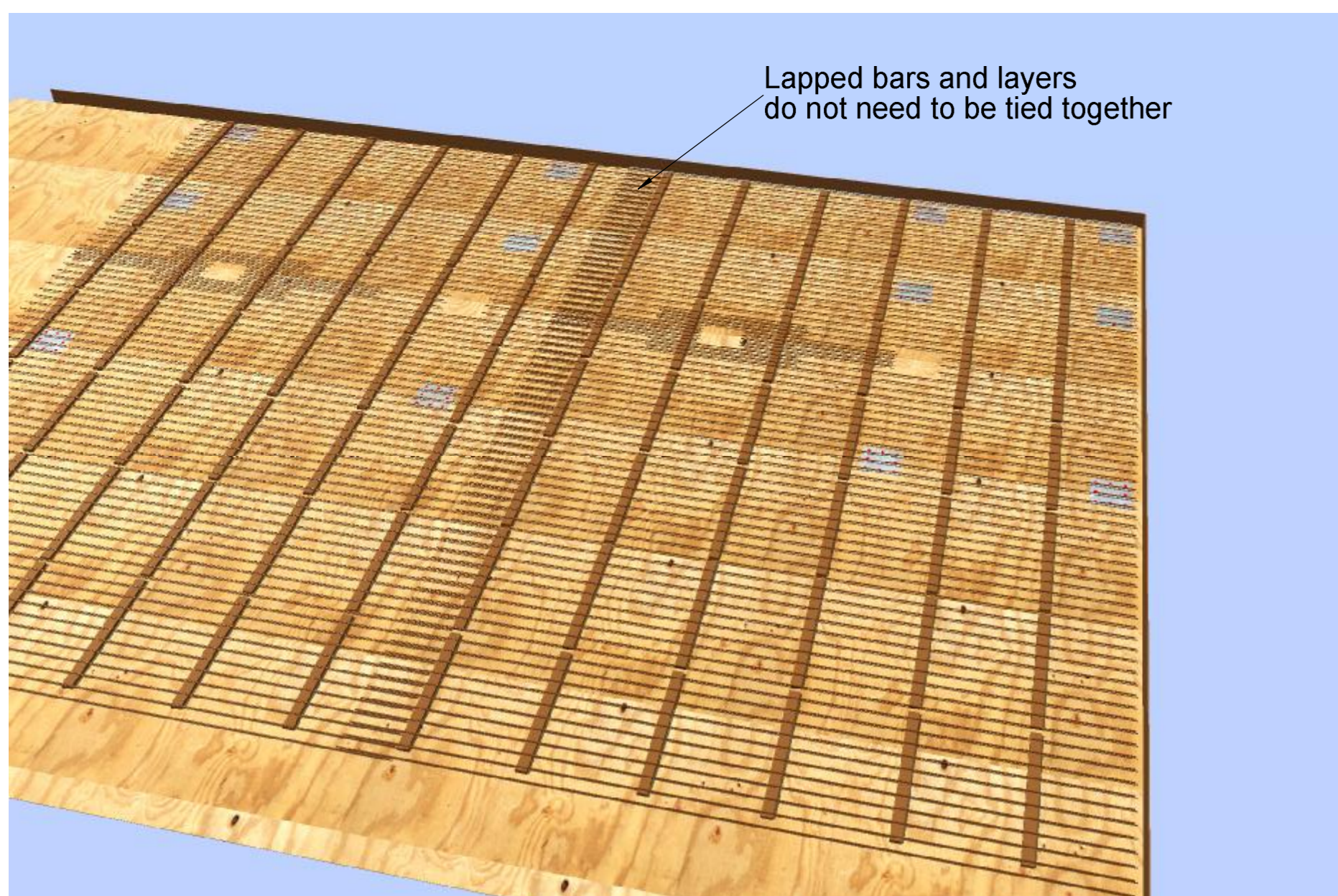


3. Position & align carpet - (1-5 mins per carpet)

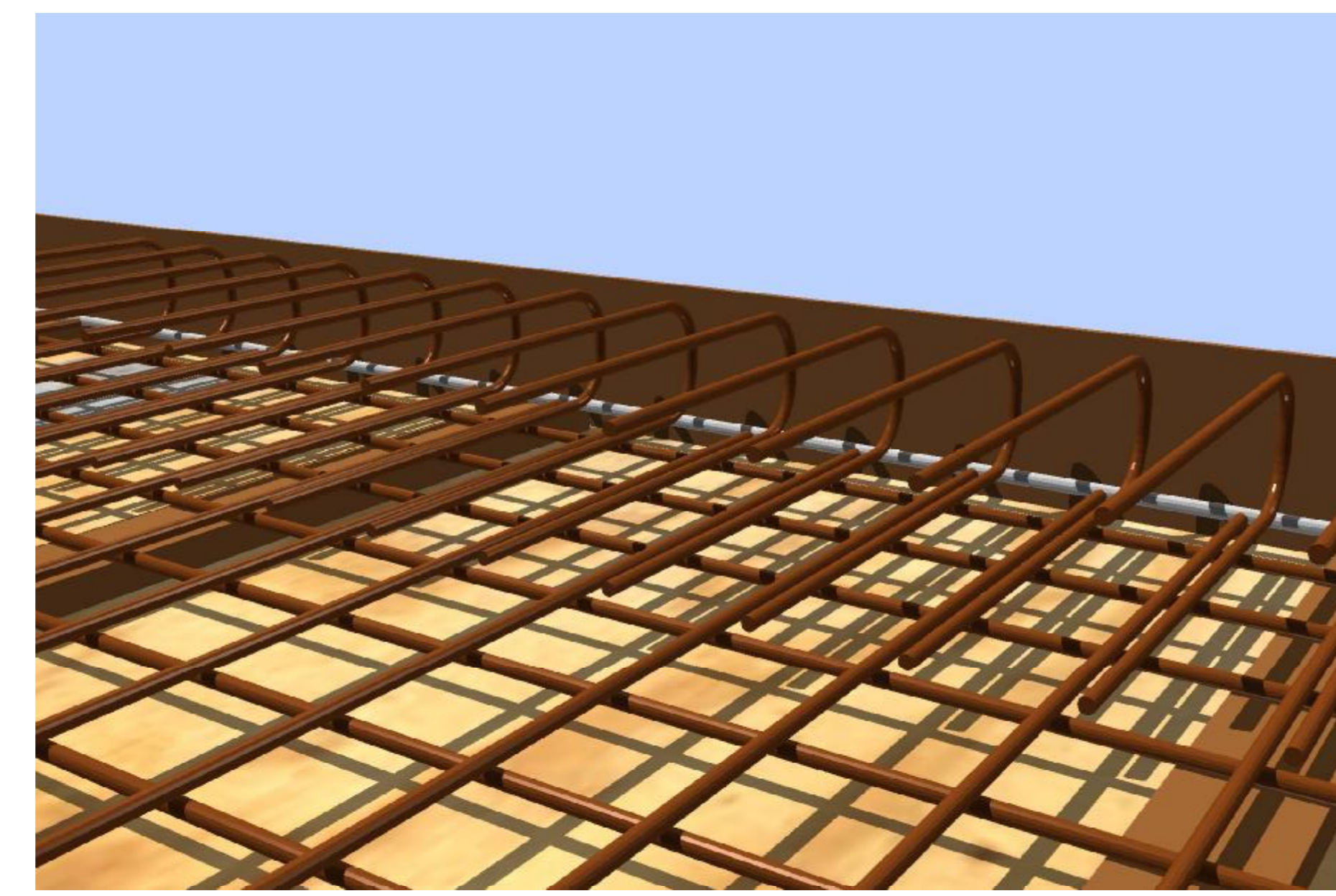
carpet landed at a calculated distance away from the start of the carpet to allow first bar (painted white) to fall into correct position once unrolled from roll.



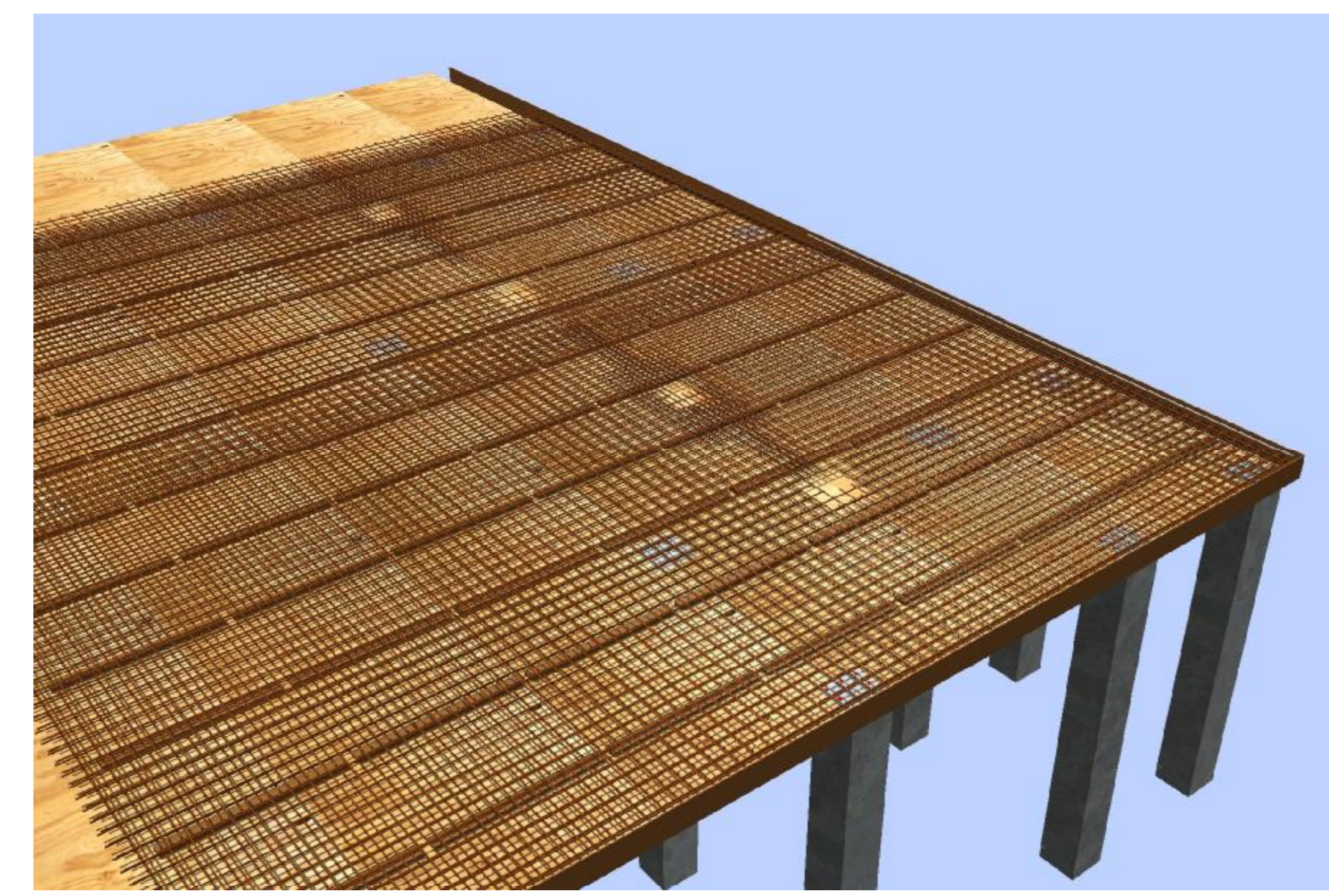
4. Roll out carpet - (1-5 mins per carpet) requiring 3-5 men



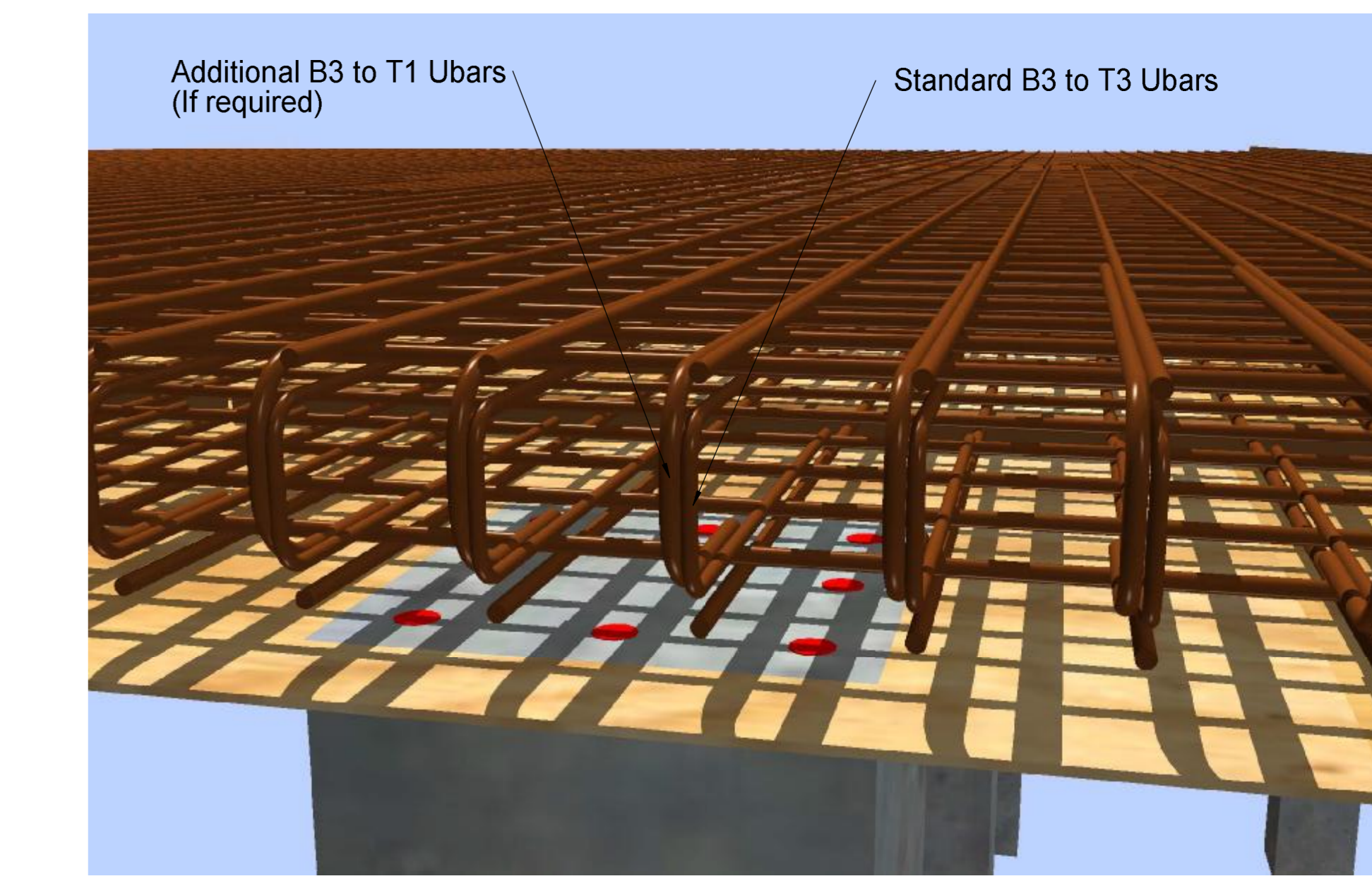
5. Repeat steps 2, 3 & 4 for remaining B1 & B2 carpets (15 min per carpet)



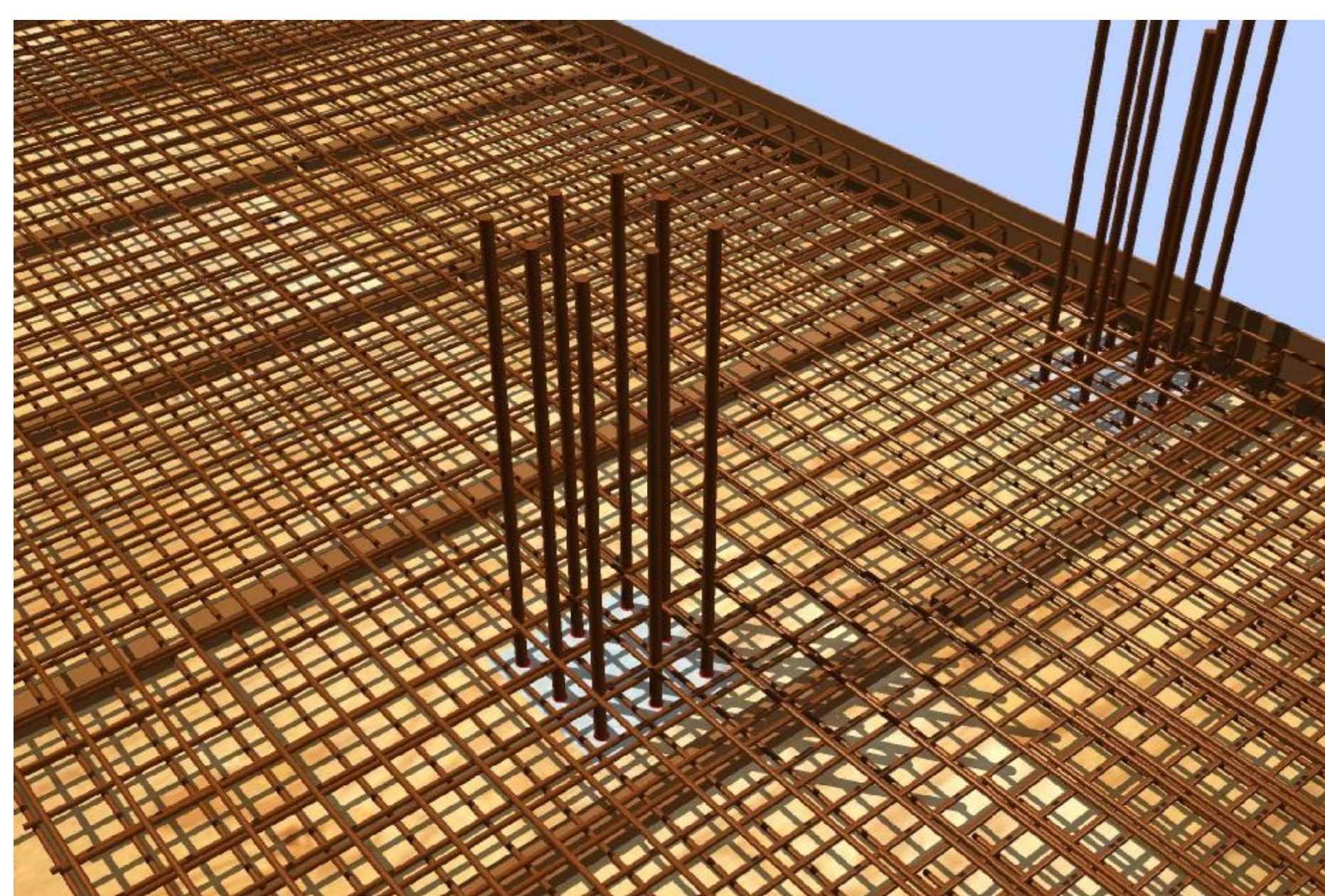
6. B2 to T2 & B3 to T3 Ubars fixed at edges in both directions, North>South & East to West (prefabricated units recommended)



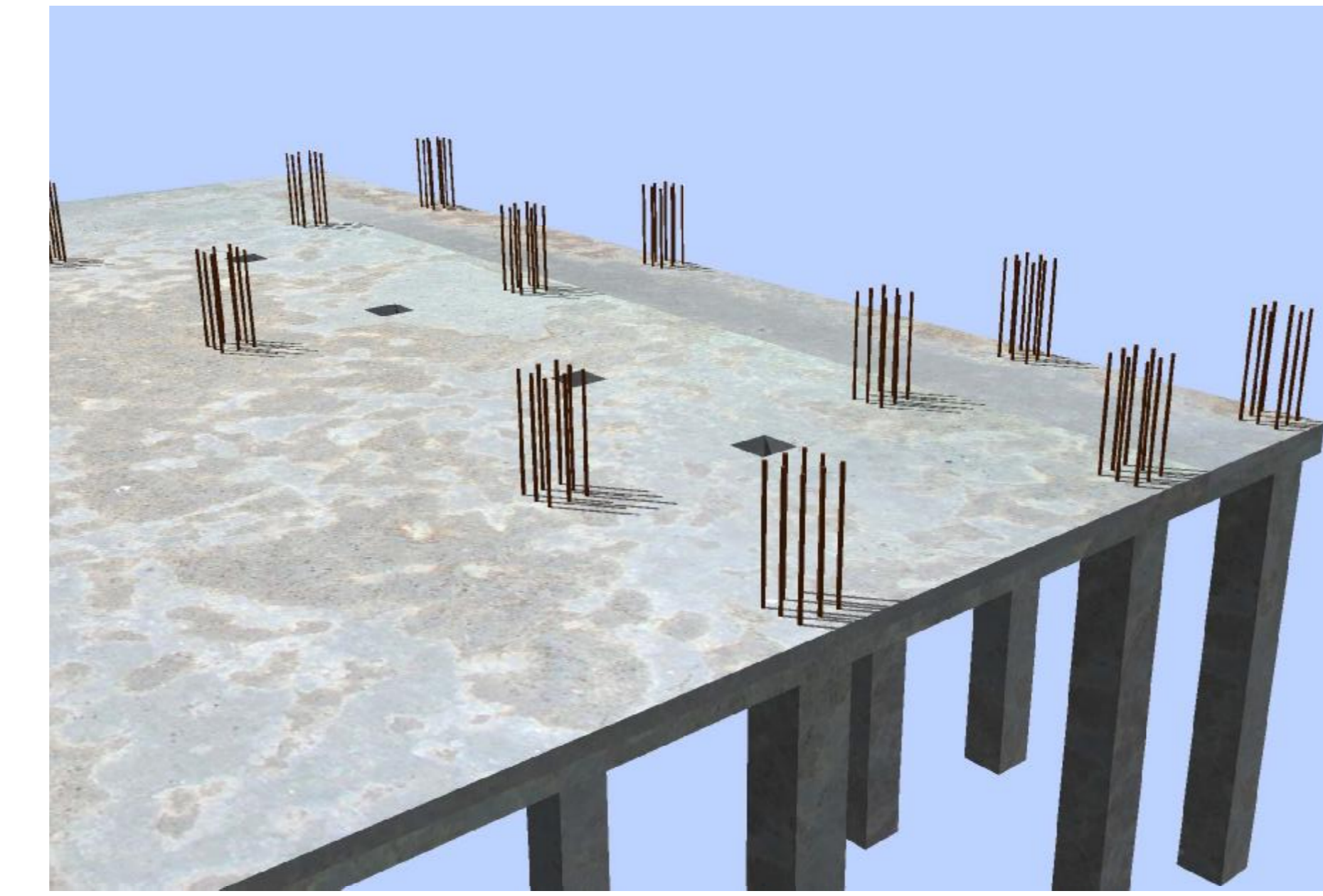
7. Repeat steps 2, 3 & 4 for remaining T2 & T1 carpets (15 min per carpet)



8. Additional T1 to B3 bars added over column regions



9. Threaded column starter bars fixed into couplers (local standard output applies)



10. Concrete pour

HY-TEN